

Bank name

Specialisation

Merrill Lynch & Co., Inc.

Investment Bank

Salomon Smith Barney Holdings Inc

Investment Bank

Caisse des Dépôts et Consignations-Groupe Cais

Specialised Group

Deutsche Bundesbank

Central Bank

Norddeutsche Landesbank Girozentrale NOR/LB

Specialised Group

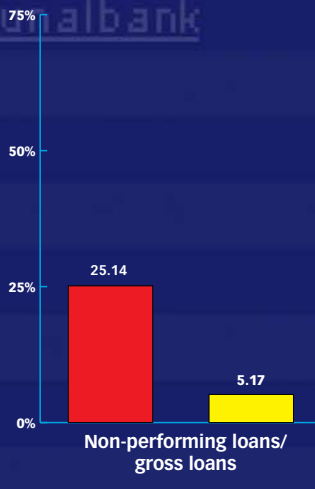
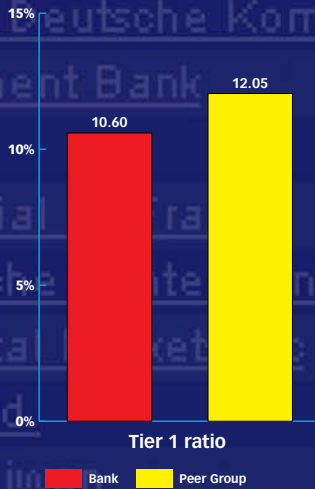
Bankgesellschaft Berlin AG

Investment Bank

BANKSCOPE

World banking information source

A database of 22,000 world banks with ratings, rating reports, news, ownership plus financial and credit analysis software



FitchRatings



BUREAU VAN DIJK
ELECTRONIC PUBLISHING

with additional information provided by:
Capital Intelligence, the Economist Intelligence Unit, Moody's, Standard & Poor's

BANKSCOPE: World banking information source

BANKSCOPE is a comprehensive, global database containing information on over 22,000 public and private banks. Combining data from seven sources, with software for searching and analysis, BANKSCOPE is a flexible information solution for researching banks worldwide. BANKSCOPE is available on the internet/intranet, on CD-ROM or it can be combined with other data sources and bespoke software to create a customised credit analysis solution. BvDEP also publishes ISIS, a complementary database, which contains information on insurance companies. The products are similar in both content and format.

Coverage

BANKSCOPE is exclusive to Bureau van Dijk Electronic Publishing (BvDEP). It has up to eight years of detailed financial information for the following public and private banks:¹

- The top 5,900 European banks
- The top 12,000 North American banks
- 900 Japanese banks
- Over 3,000 other major banks
- The leading 32 supranational banking and financial organisations

Content

Each bank report contains detailed consolidated and/or unconsolidated balance sheet and income statement with up to eight years of information. The data is provided in varying degrees of standardisation and detail to give you the facility to search and analyse banks across borders as well as being able to analyse individual banks in detail using the “as reported” data.

BANKSCOPE also provides ratings, rating reports, country risk ratings and reports, news and detailed ownership information.

Timeliness

BANKSCOPE is updated daily on the internet and 24 times a year on CD-ROM.

Analysis

BANKSCOPE has integrated analysis software to provide instant peer group analyses, graphics and statistical analysis on individual, or groups, of banks. It also provides the facility for customised analysis using Add-in technology, creating analysis templates using the integral bank credit report (BCR) facility plus the option to have a completely customised solution created for you.

¹ Coverage in March 2005. Please visit bankscope.com for the most recent coverage

The reports and the information they contain

The financial information on BANKSCOPE is provided by Fitch Ratings and compiled predominantly from the filed balance sheet and income statement as well as notes from the audited annual reports. BANKSCOPE contains up to 200 data items per bank and 36 pre-calculated ratios. Capital adequacy ratios are displayed when made available by the bank. Descriptive information is also provided and includes: address, contact numbers and web address, specialisation, world and country rankings, auditor and auditor's qualification of the statement, "nickname" and bank history. Directors' and managers' details (name and position) are also included. A profile report provides a concise summary of each bank, the global detailed and global summary reports facilitate international searching and comparisons.

For most countries the "as reported" data is provided in both the native language and English. It can be compacted in the spreadsheet report for a standardised version, these are presented in country specific templates to incorporate differences in reporting and accounting conventions. The "as reported" information is not simply an image; it can be manipulated and specific data items exported. The default peer report provides an instant comparison to the bank's peer group, whilst the executive report provides a summary of the bank's financials with integral graphics. The scanned report is an image of the annual or interim accounts, as published by the bank.

Ratings and rating reports

Ratings are provided by four agencies and a total of 18 ratings are available:

- Fitch ratings on 1,300 banks and sovereign ratings on 87 countries
- Moody's ratings on 1,200 banks
- Standard and Poor's ratings on 1,000 banks
- Capital Intelligence ratings and detailed bank reports on 280 banks in the Gulf/Mediterranean and Asia/Pacific regions and 30 banks in Central/Eastern Europe plus 5 banks in South Africa and 38 country banking reports
- EIU country risk reports on over 100 countries and EIU country finance reports (current and archived) for over 40 countries

All ratings are searchable.

Ownership

Researched by BvDEP, this section lists a bank's shareholders, banking and non-banking subsidiaries with their country, percentage of direct and total ownership and total asset figure with the source of the information (annual report or otherwise). Also displayed is the independence indicator which BvDEP developed to denote each bank's degree of independence with regard to its shareholders.

Security and price information

Provided by Fininfo this section contains historical month end price, monthly and weekly pricing series, price variants plus stock exchange(s), type of share and market capitalisation. The information can be searched by multiple variables. Up to three years of information is available per bank.

News

BANKSCOPE incorporates several thousand news stories, from various renowned sources, relating to banks and financial institutions.

Bank Name	Type of statement	Country	Year	Operating Income	Net Income	Total Assets	Equity	Rating & Trend							
Abn-Amro	LV	NL	2009	579	1	496	1	6,659	313	2,017	1	2007A			
Abn-Amro AB (Pub)	U1	BE	2009	477	2	56	7	461	2	4,246	14	75	18	3,128	7
Abn-Amro AB (Pub)	U1	BE	2009	261	3	312	2	244	3	20,238	7	1,312	3	3,341	3
Abn-Amro AB (Pub)	C2	BE	2009	204	4	33	11	12	18	2,040	21	153	10	1,598	13
Abn-Amro AB (Pub)	C1	BE	2009	282	6	12	18	140	7	6,742	10	242	14	6,256	4
Abn-Amro AB (Pub)	C1	BE	2009	218	6	100	3	214	4	21,429	3	806	4	10,669	2
Abn-Amro AB (Pub)	C2	BE	2009	186	7	73	4	133	6	8,862	9	1,205	2	3,863	8
Abn-Amro AB (Pub)	C2	BE	2009	160	8	71	5	172	5	18,124	5	505	5	637	10
Abn-Amro AB (Pub)	C2	BE	2009	116	9	17	17	17	6	4,644	8	266	13	3,036	3
Abn-Amro AB (Pub)	C2	BE	2009	10	10	65	8	104	8	10,696	4	406	5	354	17
Abn-Amro AB (Pub)	C2	BE	2009	74	11	30	10	50	11	2,822	17	313	11	2,089	10
Abn-Amro AB (Pub)	C2	BE	2009	86	12	31	6	71	10	2,339	18	600	5	2	101
Abn-Amro AB (Pub)	C2	BE	2009	88	13	23	15	83	14	2,285	19	379	10	1,622	12
Abn-Amro AB (Pub)	C2	BE	2009	64	14	23	13	36	15	3,451	15	237	15	2,281	8
Abn-Amro AB (Pub)	C2	BE	2009	53	15	23	14	28	12	5,109	11	440	7	703	15
Abn-Amro AB (Pub)	C2	BE	2009	62	16	25	12	56	13	5,596	12	450	8	750	14
Abn-Amro AB (Pub)	C1	BE	2009	45	17	36	5	45	15	2,811	15	380	13	2,031	11
Abn-Amro AB (Pub)	C2	BE	2009	116	9	17	17	17	6	4,644	8	266	13	3,036	3
Abn-Amro AB (Pub)	C1	BE	2009	9	18	1	20	9	20	8,527	7	30	18	351	18
Abn-Amro AB (Pub)	U1	BE	2009	5	20	2	18	4	19	8,021	8	25	20	346	19
Abn-Amro AB (Pub)	U1	BE	1997	2	21	17	21	2	21	11,877	8	7	21	0	21

Working with the information

Peer group analysis

Each bank is linked to a default peer group to help you assess its relative performance. Alternatively, you can use the search criteria to identify, and save, banks complying with your own peer group definitions.

Graphics

All financial items, balance sheets, profit and loss accounts and ownership structures, security information, peer and statistical analyses can be illustrated graphically.

Exporting

The results of your search can easily be downloaded (financial data is restricted to a maximum of 500 institutions per month and no ratings can be exported) to all popular formats for further analysis and for inclusion in reports and presentations. The graphs can be saved in GIF and BMP formats.

Dynamic links

All the subsidiary and holding company reports are dynamically linked so you can move between them quickly and easily. Banks' structures can be illustrated in tree diagrams which you can navigate to access further diagrams. You can have direct access to subsidiaries whose reports are not included in BANKSCOPE but are included in ORBIS² using your subscription, or pay-per-view credits.

Customised ratios, user-defined variables and own data

In addition to the standard ratios you can create your own ratios and variables that you can search by or display in the reports for more specific analysis. You can also add your own records or create amended versions of existing records for forecasting or tailored analysis. These facilities help you to integrate BANKSCOPE with your own financial analysis system.

Annotating reports

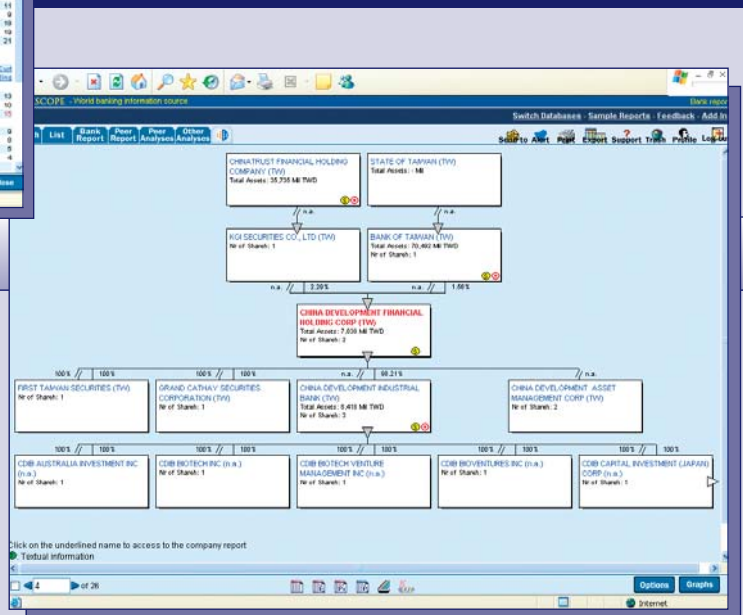
You can annotate the company reports in a special notes section that can be displayed or hidden. These notes can then be searched using a free-text facility.

Alert service

An alert service helps you to keep up to date on your portfolio of banks by e-mailing you of any changes or informing you when the latest scanned reports have been published.

Add-in

The Add-in allows you to access BANKSCOPE from within your Excel spreadsheet. You can create templates that incorporate figures from BANKSCOPE reports, with graphs and equations that you have created in Excel. The Add-in technology will establish a dynamic link between your template and BANKSCOPE, allowing you to import information from any bank instantly into your spreadsheet. As this link is dynamic,



the information in your template will automatically be refreshed when the data is updated in BANKSCOPE. BvDEP can create bespoke templates for analysis, tailored to your requirements.

Matching software

Using BvDEP's matching software you can link data in any text file with banks on BANKSCOPE, cross-referencing parameters to verify and add data to your database files, or to use the BANKSCOPE functionality to analyse specific groups of banks identified in-house.

Bank credit report (BCR)

You can create your own reports and analysis templates, using the click and drag BCR package, combining data and graphics from BANKSCOPE with your own sections for comment and analysis.

User-friendly data presentation

The data is presented in a hierarchical format so you can look at the most general report, (global detailed), and unfold the line items to see the more detailed accounts (raw data). Alternatively, you can go directly to the most detailed reports.

Customised solutions

BvDEP offers various options for customised credit analysis that accurately reflect your risk appetite and rating philosophy. This can be as simple as creating a seamless link between your existing credit analysis system and data from one of our products, or as advanced as building a complete bespoke system that integrates:

- data from BANKSCOPE,
- other external information sources,
- your in-house data and comment,

and gives an instant credit assessment according to your credit methodology. Please visit bvdep.com/customisedsolutions for more information.

² ORBIS contains information on over 12 million companies, banks and insurance companies around the world and incorporates BvDEP's full company ownership database.

BANKSCOPE can benefit many areas of your research and development:

The benefits of BANKSCOPE include:

Comprehensive coverage

BANKSCOPE contains information on both public and private banks worldwide, integrating the highly regarded Fitch Ratings database with other reputable data sources. Fitch Ratings will add requested banks to the BANKSCOPE database free of charge if you supply the necessary statements.

Standardised and "as reported" data

You choose which data format to use depending on your research project; use the standardised formats for cross-border searching and to identify peer groups, and the "as reported" data to analyse individual banks in detail.

Flexible analysis options

Choose simple graphs or develop a complete credit analysis system using BANKSCOPE - you can even work with BvDEP's consultants to develop a unique customised solution for your organisation. BANKSCOPE also includes simplified search options for less experienced users.

Reliable customer service and consultancy

BANKSCOPE is easy to use and a subscription includes helpline support and training. BvDEP also has a team of experts to develop and support both standard and customised solutions.

Management consultancy

- Integral peer and statistical analysis
- In depth analysis of banks by region, country and specialisation
- Simple exporting of tables and graphics for presentations

Corporate strategy

- Detailed analysis of individual banks, including recent news stories and ownership structures, for competitive analysis

Equity research

- Accurate benchmarking with the inclusion of both public and private banks for rational peer group comparison

Credit research and treasury

- Excellent global coverage with comprehensive inclusion of private banks
- In depth analysis of individual banks, such as relative comparisons by sector, region, size or specialisation
- Integral analysis functionality with the option for customised credit scoring and consultancy
- External risk assessment using the ratings, rating reports and country risk reports
- Local investment evaluation using peer group analysis to identify the most secure banks in different regions

Corporate finance, M&A

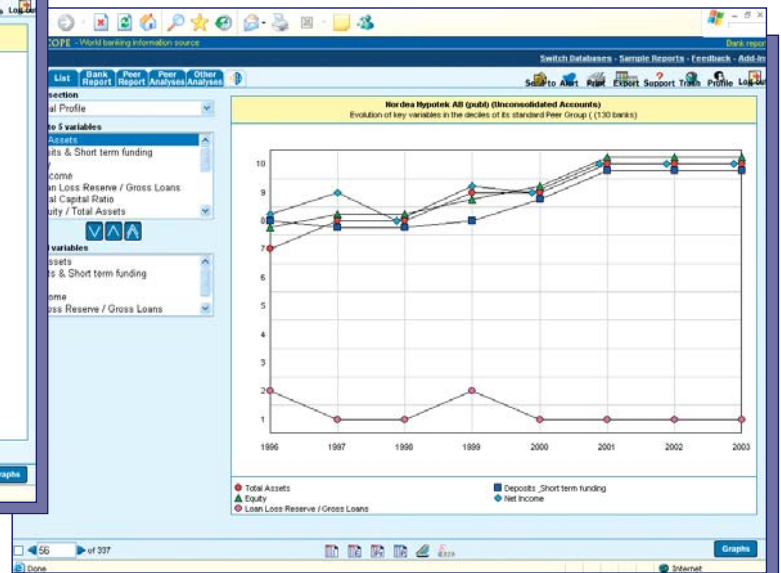
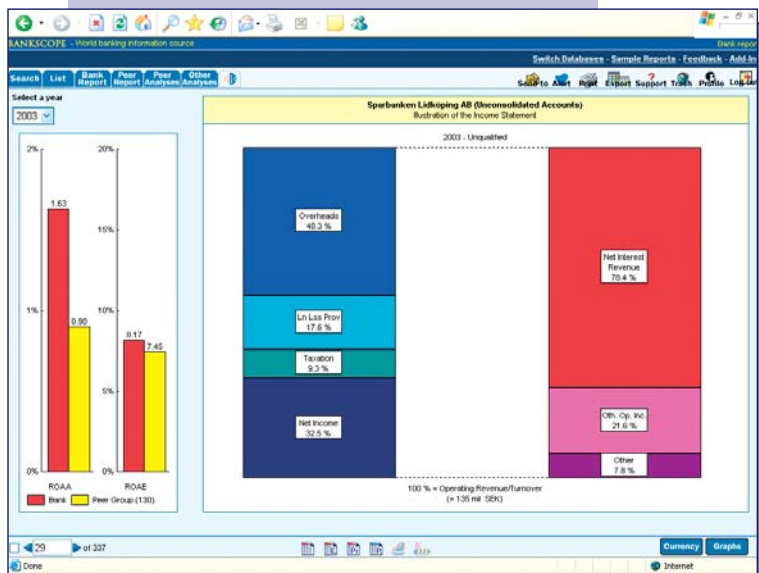
- Flexible search criteria for the identification of acquisition targets, including searching by percentage of ownership
- Instant comparison of target banks' performances against peer groups

Research departments

- Advanced search functions such as Boolean logic and time series searching for expert users
- Time-saving dynamic links to subsidiaries, holdings and banks' websites
- Efficient use of resources with BANKSCOPE's integrated data such as news and country risk reports

Academic research

- Thorough analysis of banks, and their environs, including cross-border comparisons of banking sectors
- Relevant skill for students, welcomed by employers
- Professional level of information and analysis for research and teaching





BUREAU VAN DIJK
ELECTRONIC PUBLISHING

Belgium

Avenue Louise 250
1050 Brussels
tel: 32 2 639 06 06
fax: 32 2 648 82 30
brussels@bvdep.com

Netherlands

Rivierstaete
Amsteldijk 166
1079 LH Amsterdam
tel: 31 (20) 5400 100
fax: 31 (20) 5400 111
amsterdam@bvdep.com

Slovakia

Kutlikova 17
852 50 Bratislava
tel: 421(2) 682 86 760
fax: 421 (2) 682 86 763
bratislava@bvdep.com

United States

NY Information Technology Center
14th Floor
55 Broad Street
New York NY 10004
tel: 1 (212) 797 3550
fax: 1 (212) 797 3555
newyork@bvdep.com

204, 725 Greenwich Street
San Francisco
California CA 94133
tel: 1 (415) 773 1107
fax: 1 (415) 773 1269
sanfrancisco@bvdep.com

United Kingdom

Northburgh House
10 Northburgh Street
London
EC1V 0PP
tel: 44 (20) 7549 5000
fax: 44 (20) 7549 5010
london@bvdep.com

Italy

Via Vincenzo Monti 15
20123 Milan
tel: 39 (02) 43 98 22 77
fax: 39 (02) 48 01 68 12
milan@bvdep.com

Via Savoia 78

00198 Rome
tel: 39 (06) 85 23 72 47
fax: 30 (06) 85 35 01 87
rome@bvdep.com

Denmark

Ny Oestergade 12
1101 Copenhagen K
tel: 45 33 4545 20
fax: 45 33 4545 30
copenhagen@bvdep.com

France

92 Rue de Richelieu
75002 Paris
tel: 33 1 53 45 46 00
fax: 33 1 53 45 46 28
paris@bvdep.com

Spain

Palacio de Miraflores
Carrera de San Jerónimo
15 - 2º Planta
28014 Madrid
tel: 34 (91) 454 70 98
fax: 34 (91) 454 70 01
madrid@bvdep.com

Japan

T&H Bldg. 5F
2-2-5 Kanda Tsukasa-cho
Chiyoda ku
Tokyo 101-0048
tel: 81 (3) 5256 6720
fax: 81 (3) 5256 6728
tokyo@bvdep.com

China

Units 825/826 Guotou Dasha
7 Fuchengmen Wai Dajie
Xicheng District
Beijing 100037
tel: 86 (10) 6809 5685
fax: 86 (10) 6809 5686
beijing@bvdep.com

Germany

Hanauer Landstraße 175-179
60314 Frankfurt
tel: 49 (69) 9636 65 0
fax: 49 (69) 9636 65 50
frankfurt@bvdep.com

Austria

Gurkgasse 50 / Top 3
A-1140 Vienna
tel: 43 (1) 958 1084
fax: 43 (1) 958 1067
vienna@bvdep.com

Switzerland

Rue Charles-Sturm 20
1206 Geneva
tel: 41 (22) 703 5143
fax: 41 (22) 346 1151
geneva@bvdep.com

Singapore

16 Raffles Quay
42-06 Hong Leong Building
Singapore 048581
tel: 65 6325 1230
fax: 65 6325 1235
singapore@bvdep.com

bvdep.com